

What's different about this policy for Dec 2023?

This year, we have made changes to reflect trends we have seen over the past year (see page for a summary which could inform training discussions) and especially in the light of changes to KCSIE – the most significant change relating to filtering and monitoring, as well as to shorten this document.

Note that the document will be a lot shorter once you have observed the notes to sections to complete and choose options from, and that the final third is the roles appendix which does not need to be read in its entirety by all.

You can delete this whole section should you choose.

Changes in this document - [Appropriate filtering and monitoring](#) The DSL has now been asked to take lead responsibility for web filtering and monitoring, marking a clear shift. Schools now need to follow the new DfE standards and consider the roles and responsibilities of all staff – for DSLs and SLT, the challenge is to better understand, review and drive the rationale behind decisions in this area. Tech teams and safeguarding teams will need to work much more closely together for this to be possible and technicians will be charged to carry out regular checks and feed back to DSL teams. All staff need to be aware of the changes and renewed emphasis and play their part in feeding back about overblocking or gaps in the filtering provision. Schools will also be reviewing their approaches to monitoring in line with the standards (note that filtering and monitoring are not the same – there is guidance around this for DSLs at <https://safefiltering.lgfl.net>).

Inspire Partnership Academy Trust Online Safety Policy

Approval Date:	December 2023
Approved by:	Rob Carpenter
Policy Owner:	Stephen Schwartz
Review date:	December 2024

Contents

NB – don't edit section titles here or you will break the list – go to the relevant section to change; then this table will then update when you save/exit or when you click the table below and click on update.

What's different about this policy for Dec 2023?	1
Contents	3
1. Introduction	5
1.1. Key people / dates	5
1.2. What is this policy?	5
1.3. Who is it for; when is it reviewed?	5
1.4. Who is in charge of online safety?	6
1.5. What are the main online safety risks in 2023/2024?	6
1.6. How will this policy be communicated?	7
2. Overview	7
2.1. Aims	7
2.2. Further Help and Support	8
3. Scope	8
4. Roles and responsibilities	9
5. Education and curriculum	9
6. Handling safeguarding concerns and incidents	10
6.2. Actions where there are concerns about a child	12
7. Sexting – sharing nudes and semi-nudes	13
8. Upskirting	14
9. Bullying	14
10. Child-on-child sexual violence and sexual harassment	14
11. Misuse of school technology (devices, systems, networks or platforms)	15
12. Social media incidents	15
13. Data protection and cybersecurity	16
14. Appropriate filtering and monitoring	16
15. Messaging/commenting systems (incl. email, learning platforms & more)	18
15.1. Authorised systems	18
16. Behaviour / usage principles	19
17. Online storage or learning platforms	20
18. School website	20
19. Digital images and video	20

20. Social media	22
20.1. Our SM presence	22
20.2. Staff, pupils' and parents' SM presence	22
21. Device usage	25
21.2. Personal devices including wearable technology and bring your own device (BYOD)	25
21.3. Use of school devices	26
22. Trips / events away from school	26
23. Searching and confiscation	27
1. Appendix	28
1.1. Roles	28
1.2. All staff	28
1.3. Headteacher/Principal – [NAME - don't edit on contents page but in titles themselves]	29
1.4. Designated Safeguarding Lead / Online Safety Lead – [NAME - don't edit on contents page but in titles themselves]	30
1.5. Governing Body, led by Online Safety / Safeguarding Link Governor – [NAME - don't edit on contents page but in titles themselves]	32
1.6. PSHE / RHE Lead/s – [NAME - don't edit on contents page but in titles themselves]	33
1.7. Computing Lead – [NAME - don't edit on contents page but in titles themselves]	34
1.8. Subject / aspect leaders	35
1.9. Network Manager/other technical support roles – [NAME - don't edit on contents page but in titles themselves]	35
1.10. Data Protection Officer (DPO) – [NAME - don't edit on contents page but in titles themselves]	37
1.11. Volunteers and contractors (including tutor)	37
1.12. Pupils	38
1.13. Parents/carers	38
1.14. External groups including parent associations – [GROUP NAME - don't edit on contents page but in title]	38

1. Introduction

1.1. Key people / dates

[Insert your school name & logo here]	Designated Safeguarding Lead (DSL), with lead responsibility for filtering and monitoring	[]
	Deputy Designated Safeguarding Leads / DSL Team Members	[]
	Link governor for safeguarding	[]
	Link governor for webfiltering [if different; if not, delete this box and reference above]	
	Curriculum leads with relevance to online safeguarding and their role [e.g. PSHE/RHE/RSE/Computing leads]	[]
	Network manager / other technical support - Plum or Turn It On	[]
	Date this policy was reviewed and by whom	[]
	Date of next review and by whom	[]

1.2. What is this policy?

- 1.2.1. Online safety is an integral part of safeguarding and requires a whole school, cross-curricular approach and collaboration between key school leads. Accordingly, this policy is written in line with 'Keeping Children Safe in Education' 2023 (KCSIE), 'Teaching Online Safety in Schools', statutory RHE guidance and other statutory documents. It is cross-curricular (with relevance beyond Relationships, Health and Sex Education, Citizenship and Computing) and designed to sit alongside or be integrated into your school's statutory Child Protection & Safeguarding Policy. Any issues and concerns with online safety must always follow the school's safeguarding and child protection procedures.

1.3. Who is it for; when is it reviewed?

- 1.3.1. This policy should be a living document, subject to full annual review but also amended where necessary during the year in response to developments in the school and local area. [the template is updated at least annually and available alongside AUPs at safepolicies.lgfl.net] Although many aspects will be informed by legislation and regulations, we will involve staff, governors, pupils and parents in writing and reviewing the policy and make sure the policy makes sense and it is possible to follow it in all respects. This will help ensure all stakeholders understand the rules that are in place and why, and that the policy affects day-to-day practice. Pupils could help to design a version in language their peers understand or help you to audit compliance. Acceptable Use Policies (see appendices) for different stakeholders help with this – ensure these are reviewed alongside this overarching policy. Any changes to this policy should be immediately disseminated to all the above stakeholders.

1.4. Who is in charge of online safety?

- 1.4.1. KCSIE makes clear that “the designated safeguarding lead should take lead responsibility for safeguarding and child protection (including online safety).” The DSL can delegate activities but not the responsibility for this area and whilst subject leads, e.g. for RHE will plan the curriculum for their area, it is important that this ties into a whole-school approach.

1.5. What are the main online safety risks in 2023/2024?

- 1.5.1. Current Online Safeguarding Trends - In our school over the past year, we have particularly noticed the following in terms of device use and abuse and types of online/device-based incidents which affect the wellbeing and safeguarding of our students: [insert information from your school community here. Please do not be tempted to skip this part; information specific to your setting is invaluable and in many ways more important than what is written below. You should find the results of your online safety audit a useful source of information - refer to issues the school has dealt with over the ;ast 12 months, relating to online safety.]

School name will review the policy during the year to reflect any changes resulting from the Online Safety Bill being passed into law. Use the following information to inform you local context; The continued cost-of-living crisis has meant that children have spent more time online and therefore exposed to all manner of online harms as families have had to cut back on leisure activities and the public provision of free activities for young people has reduced further. Against this background, the Ofcom ‘Children and parents: media use and attitudes report 2023’ has shown that YouTube remains the most used site or

app among all under 18s and the reach of WhatsApp, TikTok and Snapchat increased yet further. As a school we recognise that many of our children and young people are on these apps regardless of age limits, which are often misunderstood or ignored. We therefore remember to remind all about best practice while remembering the reality for most of our students is quite different. This is striking when you consider that 20% of 3-4 year olds have access to their OWN mobile phone (let alone shared devices), rising to over 90 percent by the end of Primary School, and the vast majority have no safety controls or limitations to prevent harm or access to inappropriate material. At the same time, even 3 to 6 year olds are being tricked into 'self-generated' sexual content (Internet Watch Foundation Annual Report) while considered to be safely using devices in the home and the 7-10 year old age group is the fastest growing for this form of child sexual abuse material, up 60 percent within 12 months to represent over 60,000 cases found (of this same kind where the abuser is not present).

1.6. How will this policy be communicated?

1.6.1. This policy can only impact upon practice if it is a (regularly updated) living document. It must be accessible to and understood by all stakeholders. It will be communicated in the following ways: [NB this entire list will need checking/amending for your setting. Consider each year to what extent elements can be best reminded to staff throughout the year]

1.6.1.1. Posted on the school website

1.6.1.2. Part of school induction pack for all new staff (including temporary, supply and non-classroom-based staff and those starting mid-year)

1.6.1.3. Integral to regular safeguarding updates and training for all staff

1.6.1.4. Clearly reflected in the Acceptable Use Policies (AUPs) for staff, volunteers, contractors, governors, pupils and parents/carers (which must be in accessible language appropriate to these groups), which will be issued to whole school community, on entry to the school, annually and whenever changed, plus displayed in school

2. Overview

2.1. Aims

2.1.1. This policy aims to promote a whole school approach to online safety by:

2.1.1.1. Setting out expectations for all [insert school name] community members' online behaviour, attitudes and activities and use of digital technology (including when devices are offline)

- 2.1.1.2. Helping safeguarding and senior leadership teams to have a better understanding and awareness of all elements of online safeguarding through effective collaboration and communication with technical colleagues (e.g. for filtering and monitoring), curriculum leads (e.g. RHE) and beyond.
- 2.1.1.3. Helping all stakeholders to recognise that online/digital behaviour standards (including social media activity) must be upheld beyond the confines of the school gates and school day, regardless of device or platform, and that the same standards of behaviour apply online and offline.
- 2.1.1.4. Facilitating the safe, responsible, respectful and positive use of technology to support teaching & learning, increase attainment and prepare children and young people for the risks and opportunities of today's and tomorrow's digital world, to survive and thrive online
- 2.1.1.5. Helping school staff working with children to understand their roles and responsibilities to work safely and responsibly with technology and the online world:
 - 2.1.1.5.1. for the protection and benefit of the children and young people in their care, and
 - 2.1.1.5.2. for their own protection, minimising misplaced or malicious allegations and to better understand their own standards and practice
 - 2.1.1.5.3. for the benefit of the school, supporting the school ethos, aims and objectives, and protecting the reputation of the school and profession
- 2.1.1.6. Establishing clear structures by which online misdemeanours will be treated, and procedures to follow where there are doubts or concerns (with reference to other school policies such as Behaviour Policy or Anti-Bullying Policy)

2.2. Further Help and Support

- 2.2.1. Internal school channels should always be followed first for reporting and support, as documented in school policy documents, especially in response to incidents, which should be reported in line with your Child Protection & Safeguarding Policy. The DSL will handle referrals to local authority multi-agency safeguarding hubs (MASH) [edit if different name in your area] and normally the headteacher will handle referrals to the LA designated officer (LADO). The local authority, academy trust or third-party support organisations you work with may also have advisors to offer general support.
- 2.2.2. Beyond this, [reporting.lgfl.net](https://www.lgfl.net) has a list of curated links to external support and helplines for both pupils and staff, including the Professionals' Online-Safety Helpline from the UK Safer Internet Centre and the NSPCC Report Abuse Helpline for sexual harassment or abuse, as well as hotlines for hate crime, terrorism and fraud which might be useful to share with parents, and anonymous

support for children and young people. Training is also available via safetraining.lgfl.net

3. Scope

- 3.1. This policy applies to all members of the [insert school name] community (including teaching, supply and support staff, governors, volunteers, contractors, students/pupils, parents/carers, visitors and community users) who have access to our digital technology, networks and systems, whether on-site or remotely, and at any time, or who use technology in their school role.

4. Roles and responsibilities

- 4.1. This school is a community, and all members have a duty to behave respectfully online and offline, to use technology for teaching and learning and to prepare for life after school, and to immediately report any concerns or inappropriate behaviour, to protect staff, pupils, families and the reputation of the school. We learn together, make honest mistakes together and support each other in a world that is online and offline at the same time.
- 4.2. Depending on their role, all members of the school community should read the relevant section in Annex A of this document that describes individual roles and responsibilities. Please note there is one for All Staff which must be read even by those who have a named role in another section. There are also pupil, governor, etc role descriptions in the annex.
- 4.3. In 2023/2024, it is vital that all members understand their responsibilities and those of others when it comes to filtering and monitoring. All staff have a key role to play in feeding back on potential issues. [this sentence is new in 2023/4 and there is lots more through the document]

5. Education and curriculum

- 5.1. It is important that schools establish a carefully sequenced curriculum for online safety that builds on what pupils have already learned and identifies subject content that is appropriate for their stage of development.
- 5.2. As well as teaching about the underpinning knowledge and behaviours that can help pupils navigate the online world safely and confidently regardless of the device, platform or app, [Teaching Online Safety in Schools](#) recommends embedding teaching about online safety and harms through a whole school approach and provides an understanding of these risks to help tailor teaching and support to the specific needs of pupils, including vulnerable pupils – dedicated training around this with curriculum

mapping for RHE/PSHE and online safety leads is available at safetraining.lgfl.net

- 5.3. RHE guidance also recommends schools assess teaching to “identify where pupils need extra support or intervention [through] tests, written assignments or self evaluations, to capture progress.”
- 5.4. Online safety will be taught through the Computing and RHE elements of the Inspire Partnership Curriculum - [add link to LTP](#)
- 5.5. Equally, all staff should carefully supervise and guide pupils when engaged in learning activities involving online technology (including, extra-curricular, extended school activities if relevant and remote teaching), supporting them with search skills, critical thinking (e.g. disinformation, misinformation and fake news), age appropriate materials and signposting, and legal issues such as copyright and data law. saferesources.lgfl.net has regularly updated theme-based resources, materials and signposting for teachers and parents.
- 5.6. At [\[Insert school name\]](#), we recognise that online safety and broader digital resilience must be thread throughout the curriculum and that is why we are working to adopt the cross-curricular framework ‘Education for a Connected World – 2020 edition’ from UKCIS (the UK Council for Internet Safety) through the use of the Project Evolve materials created by the UK Safer Internet Centre.
- 5.7. Annual reviews of curriculum plans / schemes of work (including for SEND pupils) are used as an opportunity to follow this framework more closely in its key areas of Self-image and Identity, Online relationships, Online reputation, Online bullying, Managing online information, Health, Wellbeing and lifestyle, Privacy and security, and Copyright and ownership. [\[link to progression map\]](#)
- 5.8. This is done within the context of an annual online safety audit, which is a collaborative effort led by [\[insert names and any key information you find may be useful / this can also be inserted into the ‘What are the main online safety risks in 2023/2024?’ section - this audit will be completed with SS and school DSLs by the end of Autumn \]\]](#)

6. Handling safeguarding concerns and incidents

- 6.1.1. It is vital that all staff recognise that online safety is a part of safeguarding (as well as being a curriculum strand of Computing, PSHE/RHE and Citizenship).
- 6.1.2. General concerns must be handled in the same way as any other safeguarding concern; safeguarding is often referred to as a jigsaw puzzle, so all stakeholders should err on the side of talking to the online-safety lead / designated safeguarding lead to contribute to the overall picture or highlight what might not yet be a problem.

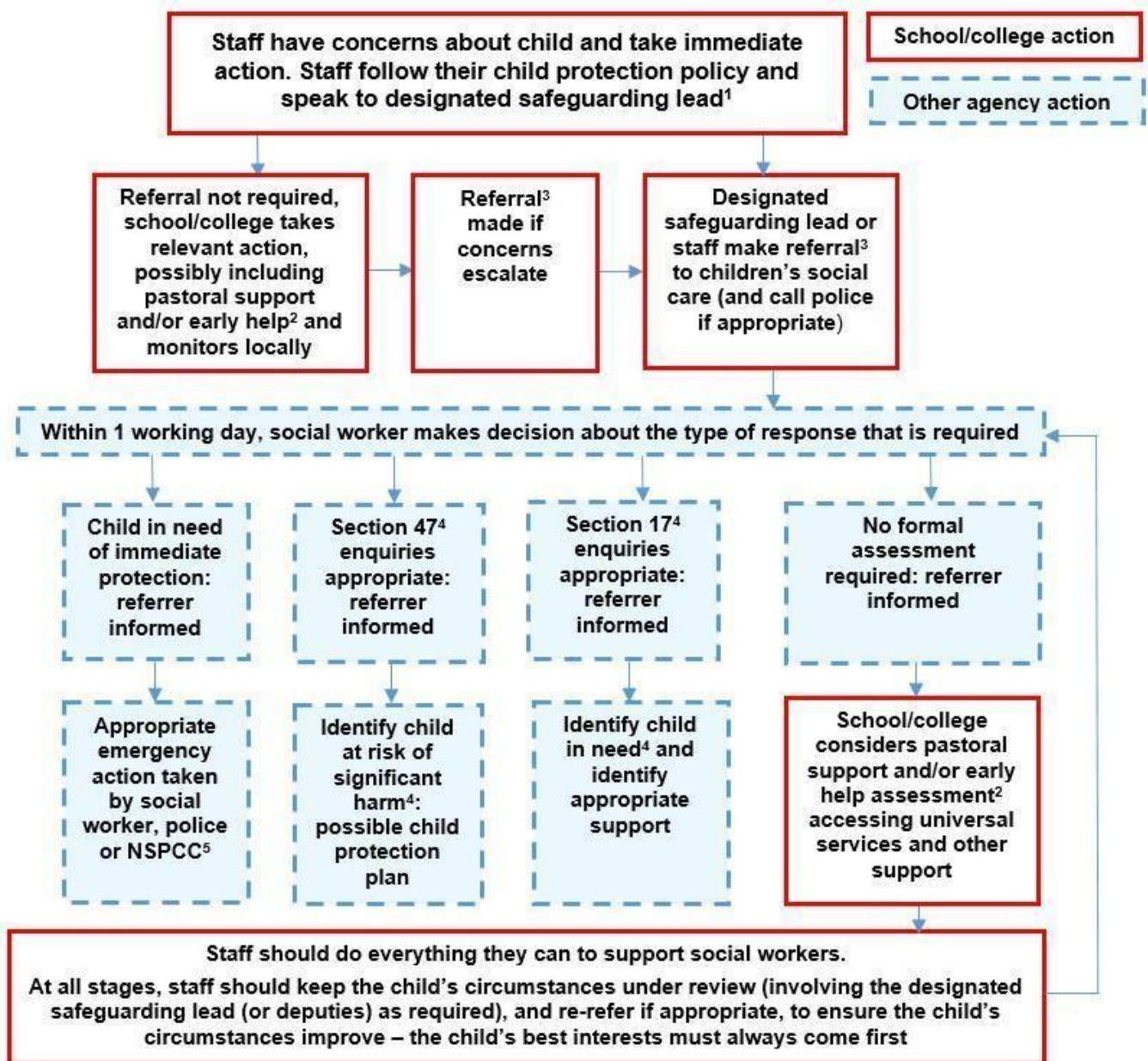
- 6.1.3. Support staff will often have a unique insight and opportunity to find out about issues first in the playground, corridors, toilets and other communal areas outside the classroom (particularly relating to bullying and sexual harassment and violence).
- 6.1.4. School procedures for dealing with online safety will be mostly detailed in the following policies (primarily in the first key document):[Complete/amend this list as appropriate – there may be more and you may want to link to them either in this list or by adding them to the appendix at the end of this document]
- 6.1.4.1. Safeguarding and Child Protection Policy
 - 6.1.4.2. Sexual Harassment / Child-on-Child Abuse Policy (if separate)
 - 6.1.4.3. Anti-Bullying Policy
 - 6.1.4.4. Behaviour Policy (including school sanctions
 - 6.1.4.5. Acceptable Use Policies
 - 6.1.4.6. Prevent Risk Assessment / Policy
 - 6.1.4.7. Data Protection Policy, agreements and other documentation (e.g. privacy statement and consent forms for data sharing, image use etc)
 - 6.1.4.8. Cybersecurity
- 6.1.5. This school commits to take all reasonable precautions to ensure safeguarding pupils online, but recognises that incidents will occur both inside school and outside school (and that those from outside school will continue to impact pupils when they come into school or during extended periods away from school). All members of the school are encouraged to report issues swiftly to allow us to deal with them quickly and sensitively through the school’s escalation processes.
- 6.1.6. Any suspected online risk or infringement should be reported to the online safety lead / designated safeguarding lead on the same day – where clearly urgent, it will be made by the end of the lesson.
- 6.1.7. Any concern/allegation about staff misuse is always referred directly to the Headteacher, unless the concern is about the Headteacher in which case the complaint is referred to the Chair of Governors and the LADO (Local Authority’s Designated Officer). Staff may also use the NSPCC Whistleblowing Helpline (you may want to display a poster with details of this / other helplines in the staff room – see posters.lgfl.net and reporting.lgfl.net).
- 6.1.8. The school will actively seek support from other agencies as needed (i.e. the local authority, LGfL, UK Safer Internet Centre’s Professionals’ Online Safety

Helpline (POSH), NCA CEOP, Prevent Officer, Police, IWF and Harmful Sexual Behaviour Support Service). The DfE guidance [Behaviour in Schools, advice for headteachers and school staff](#) September 2022 provides advice and related legal duties including support for pupils and powers of staff when responding to incidents – see pages 32-34 for guidance on child on child sexual violence and harassment, behaviour incidents online and mobile phones.

- 6.1.9. We will inform parents/carers of online-safety incidents involving their children, and the Police where staff or pupils engage in or are subject to behaviour which we consider is particularly concerning or breaks the law (particular procedures are in place for sexting and upskirting; see section below).
- 6.1.10. The school should evaluate whether reporting procedures are adequate for any future closures/lockdowns/isolation etc and make alternative provisions in advance where these might be needed.

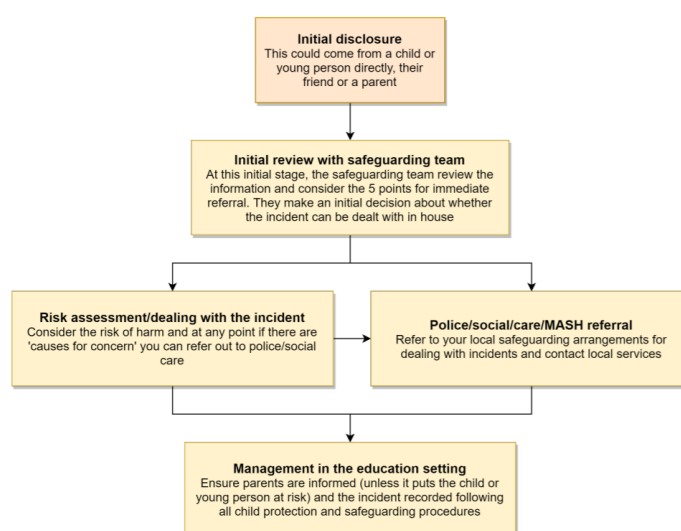
6.2. Actions where there are concerns about a child

The following flow chart (it cannot be edited) is taken from page 22 of Keeping Children Safe in Education 2022 as the key education safeguarding document. As outlined previously, online safety concerns are no different to any other safeguarding concern. [You may wish to add your own school flow chart or procedures / contacts here and who/how/where to log low-level concerns as well]



7. Sexting – sharing nudes and semi-nudes

- 7.1.1. All schools (regardless of phase) should refer to the UK Council for Internet Safety (UKCIS) guidance on sexting - now referred to as [Sharing nudes and semi-nudes: advice for education settings](#) to avoid unnecessary criminalisation of children. NB - where one of the parties is over 18, this is no longer sexting but child sexual abuse.
- 7.1.2. There is a one-page overview called [Sharing nudes and semi-nudes: how to respond to an incident](#) for all staff (not just classroom-based staff) to read, in recognition of the fact that it is mostly someone other than the designated safeguarding lead (DSL) or online safety lead to first become aware of an incident, and it is vital that the correct steps are taken. Staff other than the DSL must not attempt to view, share or delete the image or ask anyone else to do so, but to go straight to the DSL.
- 7.1.3. The school DSL will in turn use the full guidance document, [Sharing nudes and semi-nudes – advice for educational settings](#) to decide next steps and whether other agencies need to be involved.



*Consider the 5 points for immediate referral at initial review:

1. The incident involves an adult
2. There is reason to believe that a child or young person has been coerced, blackmailed or groomed, or there are concerns about their capacity to consent (for example, owing to special educational needs)
3. What you know about the images or videos suggests the content depicts sexual acts which are unusual for the young person's developmental stage, or are violent
4. The images involves sexual acts and any pupil in the images or videos is under 13
5. You have reason to believe a child or young person is at immediate risk of harm owing to the sharing of nudes and semi-nudes, for example, they are presenting as suicidal or self-harming

- 7.1.4. It is important that everyone understands that whilst sexting is illegal, pupils/students can come and talk to members of staff if they have made a mistake or had a problem in this area.
- 7.1.5. The documents referenced above and materials to support teaching about sexting can be found at sexting.lgfl.net

8. Upskirting

- 8.1. It is important that everyone understands that upskirting (taking a photo of someone under their clothing, not necessarily a skirt) is now a criminal offence and constitutes a form of sexual harassment as highlighted in Keeping Children Safe in Education. As with other forms of child on child abuse pupils/students can come and talk to members of staff if they have made a mistake or had a problem in this area.

9. Bullying

- 9.1. Online bullying, including incidents that take place outside school or from home should be treated like any other form of bullying and the school bullying policy should be followed for online bullying, which may also be referred to as cyberbullying, including issues arising from banter. [Insert link to your school bullying policy here and any key first steps you may want to outline here; it is important not to treat online bullying separately to offline bullying and to recognise that much bullying will often have both online and offline elements]
- 9.2. It is important to be aware that in the past 12 months there has been an increase in anecdotal reports of fights being filmed and fake profiles being used to bully children in the name of others. When considering bullying, staff will be reminded of these issues. [new addition]

Materials to support teaching about bullying and useful Department for Education guidance and case studies are at bullying.lgfl.net

10. Child-on-child sexual violence and sexual harassment

- 10.1. Part 5 of Keeping Children Safe in Education covers 'Child-on-child sexual violence and sexual harassment' and it would be useful for all staff to be aware of many aspects outlined there to support a whole-school response; case studies are also helpful for training.
- 10.2. Any incident of sexual harassment or violence (online or offline) should be reported to the DSL who will follow the full guidance. Staff should work to foster a zero-tolerance culture and maintain an attitude of 'it could happen here'. The guidance stresses that schools must take all forms of sexual violence and harassment seriously, explaining how it exists on a continuum and that behaviours incorrectly viewed as 'low level' are treated seriously and not allowed to perpetuate. The document makes specific

reference to behaviours such as bra-strap flicking and the careless use of language.

- 10.3. In the online environment, the recent proliferation of misogynistic content is particularly relevant when it comes to considering reasons for and how to combat this kind of behaviour. [Insert here any relevant actions taking place at your school or anything anyone should be aware of, e.g. re issues, Andrew Tate, actions underway, etc]

11. Misuse of school technology (devices, systems, networks or platforms)

- 11.1. Clear and well communicated rules and procedures are essential to govern pupil and adult use of school networks, connections, internet connectivity and devices, cloud platforms and social media (both when on school site and outside of school).
- 11.2. These are defined in the relevant Acceptable Use Policy [insert links or where these can be found] as well as in this document, for example in the sections relating to the professional and personal use of school platforms/networks/clouds, devices and other technology, as well as to BYOD (bring your own device) policy.
- 11.3. Where pupils contravene these rules, the school behaviour policy will be applied; where staff contravene these rules, action will be taken as outlined in the staff code of conduct/handbook. [edit names of documents as appropriate]
- 11.4. It will be necessary to reinforce these as usual at the beginning of any school year but also to remind pupils that the same applies for any home learning that may take place in future periods of absence/ closure/quarantine etc.
- 11.5. Further to these steps, the school reserves the right to withdraw – temporarily or permanently – any or all access to such technology, or the right to bring devices onto school property.
- 11.6. The new responsibilities for filtering and monitoring, led by the DSL and following the new DfE standards, may mean that more such incidents will be discovered in the coming year but the school will do its best to remind pupils and staff of this increased scrutiny at the start of the year. [note this is a new comment – only leave in second half if you intend to action these reminders]

12. Social media incidents

- 12.1. See the social media section later in this document for rules and expectations of behaviour for children and adults in the [insert school name here] community. These are also governed by school Acceptable Use Policies and [delete if your school does not have a standalone one] the school social media policy.

- 12.2. Breaches will be dealt with in line with the school behaviour policy (for pupils) or code of conduct/handbook (for staff). [edit names of documents as appropriate]
- 12.3. Further to this, where an incident relates to an inappropriate, upsetting, violent or abusive social media post by a member of the school community, [insert school name here] will request that the post be deleted and will expect this to be actioned promptly.
- 12.4. Where an offending post has been made by a third party, the school may report it to the platform it is hosted on, and may contact the Professionals' Online Safety Helpline, POSH, (run by the UK Safer Internet Centre) for support or help to accelerate this process.

13. Data protection and cybersecurity

- 13.1. All pupils, staff, governors, volunteers, contractors and parents are bound by the school's data protection and cybersecurity policy which can be found here. [insert link] It is important to remember that there is a close relationship between both data protection and cybersecurity and a school's ability to effectively safeguard children. Schools are reminded of this in KCSIE which also refers to the DfE Standards of Cybersecurity for the first time in 2023.
- 13.2. Schools should remember that data protection does not prevent, or limit, the sharing of information for the purposes of keeping children safe. As outlined in *Data protection in schools, 2023*, "It's not usually necessary to ask for consent to share personal information for the purposes of safeguarding a child." And in KCSIE 2023, "The Data Protection Act 2018 and UK GDPR do not prevent the sharing of information for the purposes of keeping children safe. Fears about sharing information must not be allowed to stand in the way of the need to safeguard and promote the welfare and protect the safety of children."

[This section has been significantly shortened from the previous version of this template to avoid duplication with cybersecurity and data protection policies)

14. Appropriate filtering and monitoring

- 14.1. Keeping Children Safe in Education has long asked schools to ensure "appropriate" web filtering and monitoring systems which keep children safe online but do not "overblock".
- 14.2. Since KCSIE 2023, in recognition of the importance of these systems to keeping children safe, the designated safeguarding lead now has lead responsibility for filtering and monitoring (see page 1 for the DSL name and the named governor with responsibility for filtering and monitoring).
- 14.3. Schools are also asked to follow the new DfE filtering and monitoring standards, which require them to:

- 14.3.1. identify and assign roles and responsibilities to manage filtering and monitoring systems
 - 14.3.2. review filtering and monitoring provision at least annually
 - 14.3.3. block harmful and inappropriate content without unreasonably impacting teaching and learning
 - 14.3.4. have effective monitoring strategies in place that meet their safeguarding needs
- 14.4. As schools get to grips with these new standards, the challenge for DSLs and SLT is to better understand, review and drive the rationale behind decisions in this area. Tech teams and safeguarding teams will need to work much more closely together for this to be possible and technicians will be charged to carry out regular checks and feed back to DSL teams.
- 14.5. ALL STAFF need to be aware of the changes and renewed emphasis and play their part in feeding back about areas of concern, potential for students to bypass systems and any potential overblocking. They can submit concerns at any point via <https://forms.gle/GpFLh4XPgyvnFKz89> and will be asked for feedback at the time of the regular checks which will now take place. [ensure this is the case – see guidance on the standards and on checks versus review at safefiltering.lgfl.net]
- 14.6. Staff will be reminded of the systems in place and their responsibilities at induction and start of year safeguarding as well as via AUPs and regular training reminders in the light of the annual review and regular checks that will be carried out. [you may wish to state here how this will take place and if you will be sharing all results with staff or a summary and how]
- 14.7. It is very important that schools understand the difference between filtering and monitoring, the meaning of overblocking and other terms, as well as how to get the best out of systems. There are guidance videos and flyers to help with this at <https://safefiltering.lgfl.net> and training is provided for all staff / safeguarding teams / technical teams as appropriate. [LGfL provides a technical and SLT/DSL course free of charge via safetraining.lgfl.net]

At [school name]:

- web filtering is provided by London Grid for Learning on school site and for school devices used in the home
- changes can be made by [staff names, ensure internal staff can make changes not only third-party teams who are not always available, Stephen Schwartz, Support Provider and School Nominated Contacts]
- overall responsibility is held by the DSL [if appropriate, add “with further SLT support from XX”]
- technical support and advice, setup and configuration are from [insert name/s]

- regular checks are made half termly by [insert role/s] to ensure filtering is still active and functioning everywhere. These are evidenced [insert detail]
- an annual review is carried out [perhaps “as part of the online safety audit to ensure a whole school approach” – a template is available at onlinesafetyaudit.lgfl.net]
- guidance on how the system is ‘appropriate’ is available at appropriate.lgfl.net [only relevant if you use LGfL filtering]

According to the DfE standards, “a variety of monitoring strategies may be required to minimise safeguarding risks on internet connected devices and may include:

- physically monitoring by staff watching screens of users
- live supervision by staff on a console with device management software
- network monitoring using log files of internet traffic and web access
- individual device monitoring through software or third-party services

At [insert school name], we use (At Inspire it is 1 and 3. The LGfL filtering provides monthly reports on top blocked search terms, most popular search categories, sites and blocked sites - allowing the school to adjust curriculum, support and training)

[too many options to provide here; please insert your rationale and the combination of methods you use, plus who the provider of technology monitoring services are.

Note that the new standards include statements such as “If mobile or app technologies are used then you should apply a technical monitoring system to the devices”]

15. Messaging/commenting systems (incl. email, learning platforms & more)

15.1. Authorised systems

- 15.1.1. Pupils at this school communicate with each other and with staff using Google Classroom only.
- 15.1.2. Staff at this school use the email system provided by Google for Education for all school emails. They never use a personal/private email account (or other messaging platform) to communicate with children or parents, or to colleagues when relating to school/child data, using a non-school-administered system. Staff are permitted to use this email system to communicate with parents, external organisations and professional activity. Email should never be used to communicate with pupils.
- 15.1.3. Staff at this school use Arbor MIS to communicate with parents through email and the Arbor Parent App.
- 15.1.4. Any systems above are centrally managed and administered by the school or authorised IT partner (i.e. they can be monitored/audited/viewed centrally; are

not private or linked to private accounts). This is for the mutual protection and privacy of all staff, pupils and parents, supporting safeguarding best-practice, protecting children against abuse, staff against potential allegations and in line with UK data protection legislation.

- 15.1.5. Use of any new platform with communication facilities or any child login or storing school/child data must be approved in advance by the school and the IPAT EdTech lead and centrally managed.
- 15.1.6. Any unauthorised attempt to use a different system may be a safeguarding concern or disciplinary matter and should be notified to the DSL (if by a child) or to the Headteacher (if by a staff member).
- 15.1.7. Where devices have multiple accounts for the same app, mistakes can happen, such as an email being sent from or data being uploaded to the wrong account. If this a private account is used for communication or to store data by mistake, the DSL/Headteacher/DPO (the particular circumstances of the incident will determine whose remit this is) should be informed immediately.

16. Behaviour / usage principles

- 16.1.1. More detail for all the points below are given in the Social media section of this policy as well as the school's acceptable use agreements, behaviour policy and staff code of conduct. [edit as appropriate and insert links or where to find them]
- 16.1.2. Appropriate behaviour is expected at all times, and the system should not be used to send inappropriate materials or language which is or could be construed as bullying, aggressive, rude, insulting, illegal or otherwise inappropriate, or which (for staff) might bring the school into disrepute or compromise the professionalism of staff.
- 16.1.3. Data protection principles will be followed at all times when it comes to all school communications, in line with the school Data Protection Policy [insert link or where to find it] and only using the authorised systems mentioned above.

[NOTE – the above section has been shortened from the previous policy template to avoid duplication or conflict with DP policies. Previously there was mention of remote access, use of Egress/encryption facilities etc. Ensure expected behaviour (including transfer of bulk pupil data and sensitive data for individual cases) is outlined in your DP policy]

- 16.1.4. Staff are allowed to use the email system for reasonable (not excessive, not during lessons) personal use but should be aware that all use is monitored, their emails may be read and the same rules of appropriate behaviour apply at all times. Emails using inappropriate language, images, malware or to adult sites

may be blocked and not arrive at their intended destination (and will be dealt with according to the appropriate policy and procedure). [If your school does not permit any personal use, edit the above paragraph to reflect this]

17. Online storage or learning platforms

- 17.1.1. All the principles outlined above also apply to any system to which you log in online to conduct school business, whether it is to simply store files or data (an online 'drive') or collaborate, learn, teach, etc.
- 17.1.2. For all these, it is important to consider data protection and cybersecurity before adopting such a platform or service and at all times when using it. [insert school name here] has a clear cybersecurity and data protection policy which staff, governors and volunteers must follow at all times. [Insert links or where to find them]

[NB in the previous version of this template this section also included the following which has been removed to avoid duplication with your data protection and cybersecurity policy. Ensure these are covered in those documents and training: password hygiene, cybersecurity and data protection best practice, privacy statements, collaboration with your DPO, file sharing permissions and procedures, use of two-factor authentication, parental permissions, where pupil work can be displayed, the differences between consumer and education products (e.g. a private Gmail account or Google Drive and those belonging to a managed educational domain).

18. School website

- 18.1.1. The school website is a key public-facing information portal for the school community (both existing and prospective stakeholders) with a key reputational value. The Headteacher/Principal and Governors have delegated the day-to-day responsibility of updating the content of the website and ensuring compliance with DfE stipulations to [insert staff name].

[NB - to help with this, LGfL has compiled RAG (red-amber-green) audits at websitesrag.lgfl.net to help ensure website requirements are met]

The site is managed hosted by [E4Education](#)

- 18.1.2. Where staff submit information for the website, they are asked to remember that schools have the same duty as any person or organisation to respect and uphold copyright law – schools have been fined thousands of pounds for copyright breaches. Sources must always be credited and material only used with permission. There are many open-access libraries of public-domain images/sounds etc that can be used. Finding something on Google or YouTube does not mean that copyright has been respected. If in doubt, check with [Stephen Schwartz](#)].

19. Digital images and video

- 19.1.1. When a pupil/student joins the school, parents/carers are asked if they give consent for their child's image to be captured in photographs or videos, for what purpose (beyond internal assessment, which does not require express consent) and for how long. Parents answer as follows:

[Ensure these are the options on your consent form and check they still meet all school needs]

- 19.1.1.1. For displays around the school
 - 19.1.1.2. For the newsletter
 - 19.1.1.3. For use in paper-based school marketing
 - 19.1.1.4. For online prospectus or websites
 - 19.1.1.5. For social media
 - 19.1.1.6. For a specific high-profile image for display or publication
 - 19.1.1.7. Etc.]
- 19.1.2. Whenever a photo or video is taken/made, the member of staff taking it will check the latest database on Arbor before using it for any purpose. [If you make further reference to the storage of images and videos in your data protection policy, please reference, copy or link to it here]
- 19.1.3. Any pupils shown in public facing materials are never identified with more than first name (and photo file names/tags do not include full names to avoid accidentally sharing them).
- 19.1.4. All staff are governed by their contract of employment and the school's Acceptable Use Policy, which covers the use of mobile phones/personal equipment for taking pictures of pupils, and where these are stored. At **[Insert school name and delete the following as appropriate:]**, no member of staff will ever use their personal phone to capture photos or videos of pupils. Photos are stored **on the Google Drive , Arbor and CPOMs** in line with the retention schedule of the school Data Protection Policy (or **[OR]** members of staff may occasionally use personal phones to capture photos or videos of pupils, but these will be appropriate, linked to school activities, taken without secrecy and not in a one-to-one situation, and always moved to school storage as soon as possible, after which they are deleted from personal devices or cloud services (NB – many phones automatically back up photos).
- 19.1.5. Staff and parents are reminded annually **[Check / edit]** about the importance of not sharing without permission, due to reasons of child protection (e.g. looked-after children often have restrictions for their own protection), data protection, religious or cultural reasons, or simply for reasons of personal privacy. Further detail on this subject and a sample letter to parents for taking photos or videos at school events can be found at parentfilming.lgfl.net

- 19.1.6. We encourage young people to think about their online reputation and digital footprint, so we should be good adult role models by not oversharing (or providing embarrassment in later life – and it is not for us to judge what is embarrassing or not).
- 19.1.7. Pupils are taught about how images can be manipulated in their online safety education programme and also taught to consider how to publish for a wide range of audiences which might include governors, parents or younger children
- 19.1.8. Pupils are advised to be very careful about placing any personal photos on social media. They are taught to understand the need to maintain privacy settings so as not to make public, personal information.
- 19.1.9. Pupils are taught that they should not post images or videos of others without their permission. We teach them about the risks associated with providing information with images (including the name of the file), that reveals the identity of others and their location. We teach them about the need to keep their data secure and what to do if they / or a friend are subject to bullying or abuse.

20. Social media

20.1. Our SM presence

- 20.1.1. [Insert school name] works on the principle that if we don't manage our social media reputation, someone else will.
- 20.1.2. Online Reputation Management (ORM) is about understanding and managing our digital footprint (everything that can be seen or read about the school online). Few parents will apply for a school place without first Googling the school, and the Ofsted pre-inspection check includes monitoring what is being said online.
- 20.1.3. Negative coverage almost always causes some level of disruption. Up to half of all cases dealt with by the Professionals Online Safety Helpline (POSH: helpline@saferinternet.org.uk) involve schools' (and staff members') online reputation.
- 20.1.4. Accordingly, we manage and monitor our social media footprint carefully to know what is being said about the school and to respond to criticism and praise in a fair, responsible manner. [If your school has no SM accounts, you may wish to add to this paragraph "...even there are no official/active school social media accounts."]

- 20.1.5. [NAME - don't edit on the contents page but in titles themselves] is responsible for managing our [Delete as appropriate] X-Twitter/Facebook/and other social media accounts and checking our Wikipedia and Google reviews and other mentions online.

20.2. Staff, pupils' and parents' SM presence

- 20.2.1. Social media (including all apps, sites and games that allow sharing and interaction between users) is a fact of modern life, and as a school, we accept that many parents, staff and pupils will use it. However, as stated in the acceptable use policies which all members of the school community sign, we expect everybody to behave in a positive manner, engaging respectfully with the school and each other on social media, in the same way as they would face to face.
- 20.2.2. This positive behaviour can be summarised as not making any posts which are or could be construed as bullying, aggressive, rude, insulting, illegal or otherwise inappropriate, or which might bring the school or (particularly for staff) teaching profession into disrepute. This applies both to public pages and to private posts, e.g. parent chats, pages or groups.
- 20.2.3. If parents have a concern about the school, we would urge them to contact us directly and in private to resolve the matter. If an issue cannot be resolved in this way, the school complaints procedure [insert link or reword to direct to the relevant person] should be followed. Sharing complaints on social media is unlikely to help resolve the matter, but can cause upset to staff, pupils and parents, also undermining staff morale and the reputation of the school (which is important for the pupils we serve).
- 20.2.4. Many social media platforms have a minimum age of 13 (note that WhatsApp is 16+), but [Delete the following sentence if not true at your school] the school regularly deals with issues arising on social media involving pupils/students under the age of 13. We ask parents to respect age ratings on social media platforms wherever possible and not encourage or condone underage use. It is worth noting that Online Harms regulation is likely to require more stringent age verification measures over the coming years.
- 20.2.5. However, the school has to strike a difficult balance of not encouraging underage use at the same time as needing to acknowledge reality in order to best help our pupils/students to avoid or cope with issues if they arise. Online safety lessons will look at social media and other online behaviour, how to be a good friend online and how to report bullying, misuse, intimidation or abuse. However, children will often learn most from the models of behaviour they see and experience, which will often be from adults.

- 20.2.6. Parents can best support this by talking to their children about the apps, sites and games they use (you don't need to know them – ask your child to explain it to you), with whom, for how long, and when (late at night / in bedrooms is not helpful for a good night's sleep and productive teaching and learning at school the next day). You may wish to refer to the [Digital Family Agreement](#) to help establish shared expectations and the [Top Tips for Parents](#) poster along with relevant items and support available from parentsafe.lgfl.net and introduce the [Children's Commission Digital 5 A Day](#).
- 20.2.7. Although the school has an official [Edit as appropriate] Facebook / X-Twitter / Instagram account and will respond to general enquiries about the school, it asks parents/carers not to use these channels, especially not to communicate about their children.
- 20.2.8. Email / Arbor Parent App is the official electronic communication channel between parents and the school. Social media, including chat apps such as WhatsApp, are not appropriate for school use. [Reference any other relevant platforms here also, or edit if social media contact is allowed, and what controls are in place]

[Edit the following for exceptions and alternative rules if social media is more widely used as part of school life, adding the restrictions and controls if it is, e.g. if a Facebook class group is allowed, then at least a second unrelated teacher must be part of the group to monitor activity between the teacher and students]

- 20.2.9. Pupils/students are not allowed* to be 'friends' with or make a friend request** to any staff, governors, volunteers and contractors or otherwise communicate via social media.
- 20.2.10. Pupils/students are discouraged from 'following' staff, governor, volunteer or contractor public accounts (e.g. following a staff member with a public Instagram account) as laid out in the AUPs. However, we accept that this can be hard to control (but this highlights the need for staff to remain professional in their private lives). In the reverse situation, however, staff must not follow such public student accounts.
 * Exceptions may be made, e.g. for pre-existing family links, but these must be approved by the Headteacher/Principal, and should be declared upon entry of the pupil or staff member to the school).
 ** Any attempt to do so may be a safeguarding concern or disciplinary matter and should be notified to the DSL (if by a child) or to the Headteacher (if by a staff member).
- 20.2.11. Staff are reminded that they are obliged not to bring the school or profession into disrepute and the easiest way to avoid this is to have the strictest privacy settings and avoid inappropriate sharing and oversharing online. They should never discuss the school or its stakeholders on social media and be careful that their personal opinions might not be attributed to the school, trust or local

authority, bringing the school into disrepute.

- 20.2.12. The serious consequences of inappropriate behaviour on social media are underlined by the fact that there has been a significant number of Prohibition Orders issued by the Teacher Regulation Agency to teaching staff that involved misuse of social media/technology.
- 20.2.13. All members of the school community are reminded that particularly in the context of social media, it is important to comply with the school policy on Digital images and video [this links to the section in this document; provide other link if you have this as a separate document] and permission is sought before uploading photographs, videos or any other information about other people.
- 20.2.14. The statements of the Acceptable Use Policies (AUPs) which all members of the school community have signed are also relevant to social media activity, as is the school's Data Protection Policy. [insert links]

21. Device usage

- 21.1.1. AUPs remind those with access to school devices about rules on the misuse of school technology – devices used at home should be used just like if they were in full view of a teacher or colleague. Please read the following in conjunction with those AUPs and the sections of this document which impact upon device usage, e.g. copyright, data protection, social media, misuse of technology, and digital images and video.

21.2. Personal devices including wearable technology and bring your own device (BYOD)

[There are too many variants to give examples to select from here; instead we have given one or two examples of the many possibilities that you can easily edit, add the word 'not' or otherwise amend]

- 21.2.1. Pupils/students [in which year group if different] are allowed to bring mobile phones in for emergencies and travelling between school and home. Add details about collection at the start of day to fit with arrangements in your school.
- 21.2.2. All staff who work directly with children should leave their mobile phones on silent and only use them in private staff areas during school hours. See also the 'Digital images and video' section of this document and the school data protection cybersecurity policies. Child/staff data should never be downloaded onto a private phone. If a staff member is expecting an important personal call when teaching or otherwise on duty, they may leave their phone with the school office to answer on their behalf or ask for the message to be left with the school office.

- 21.2.3. Volunteers, contractors, governors should leave their phones in their pockets and turned off. Under no circumstances should they be used in the presence of children or to take photographs or videos. If this is required (e.g. for contractors to take photos of equipment or buildings), permission of the headteacher should be sought (the headteacher may choose to delegate this) and this should be done in the presence of a member staff.
- 21.2.4. Parents [primary schools – where parents are regularly in the playground for drop-off or collection, consider if the rules are different here] are asked to leave their phones in their pockets and turned off when they are on site. They should ask permission before taking any photos, e.g. of displays in corridors or classrooms, and avoid capturing other children. When at school events, please refer to the Digital images and video section of this document on page . [parentfilming.lgfl.net may provide further useful guidance].
- 21.2.5. Parents are asked not to call pupils on their mobile phones during the school day; urgent messages can be passed via the school office.

21.3. Use of school devices

[NB this section has been simplified since the previous version of this template]

- 21.3.1. Staff and pupils are expected to follow the terms of the school acceptable use policies for appropriate use and behaviour when on school devices, whether on site or at home.
- 21.3.2. School devices are not to be used in any way which contravenes AUPs, behaviour policy / staff code of conduct.
- 21.3.3. Wifi is accessible to [whom?] for [insert here any allowed use of BYOD and/guest networks and any restrictions for personal devices] school-related internet use / limited personal use within the framework of the acceptable use policy. All such use is monitored.
- 21.3.4. School devices for staff or students are restricted to the apps/software installed by the school, whether for use at home or school, and may be used for learning and reasonable as well as appropriate personal use [or not if not allowed??].
- 21.3.5. All and any usage of devices and/or systems and platforms may be tracked.

22. Trips / events away from school

- 22.1.1. For school trips/events away from school, teachers will be issued a school duty phone and this number used for any authorised or emergency communications with pupils/students and parents. Any deviation from this policy (e.g. by mistake or because the school phone will not work) will be notified immediately to the

Headteacher. Teachers using their personal phone in an emergency will ensure that the number is hidden to avoid a parent or student accessing a teacher's private phone number. [Ensure that the authorised systems you use to communicate with parents as outlined within this document include any systems used in exceptional circumstances such as on trips if you notify parents of trip updates or status of arriving back at school and that these are DP compliant. You may wish to name them also here]

23. Searching and confiscation

- 23.1.1. In line with the DfE guidance '[Searching, screening and confiscation: advice for schools](#)', the Headteacher/Principal and staff authorised by them have a statutory power to search pupils/property on school premises. This includes the content of mobile phones and other devices, for example as a result of a reasonable suspicion that a device contains illegal or undesirable material, including but not exclusive to sexual images, pornography, violence or bullying. Full details of the school's search procedures are available in the school Behaviour Policy [Insert link].

1. Appendix

1.1. Roles

- 1.1.1. Please read the relevant roles & responsibilities section from the following pages. All school staff must read the “All Staff” section as well as any other relevant to specialist roles

Roles:

- All Staff
- Headteacher/Principal
- Designated Safeguarding Lead
- Governing Body, led by Online Safety / Safeguarding Link Governor
- PSHE / RHE Lead/s
- Computing Lead
- Subject / aspect leaders
- Network Manager/technician
- Data Protection Officer (DPO)
- Volunteers and contractors (including tutor)
- Pupils
- Parents/carers
- External groups including parent associations

1.2. All staff

- 1.2.1. All staff should sign and follow the staff acceptable use policy in conjunction with this policy, the school’s main safeguarding policy, the code of conduct/handbook [\[insert links here\]](#) and relevant parts of Keeping Children Safe in Education to support a whole-school safeguarding approach.
- 1.2.2. This includes reporting any concerns, no matter how small, to the designated safety lead as named in the AUP, maintaining an awareness of current online safety issues (see the start of this document for issues in 2023) and guidance (such as KCSIE), modelling safe, responsible and professional behaviours in their own use of technology at school and beyond and avoiding scaring, victim-blaming language.
- 1.2.3. Staff should also be aware of the new DfE standards and relevant changes to filtering and monitoring and play their part in feeding back about overblocking, gaps in provision or pupils bypassing protections.

1.3. Headteacher/Principal – [NAME - don't edit on contents page but in titles themselves]

1.3.1. Key responsibilities:

- 1.3.1.1. Foster a culture of safeguarding where online-safety is fully integrated into whole-school safeguarding
- 1.3.1.2. Oversee and support the activities of the designated safeguarding lead team and ensure they work technical colleagues to complete an online safety audit in line with KCSIE (including technology in use in the school) – [see LGfL's template with suggested questions at onlinesafetyaudit.lgfl.net]
- 1.3.1.3. Undertake training in offline and online safeguarding, in accordance with statutory guidance and Local Safeguarding Children Partnership support and guidance
- 1.3.1.4. Ensure ALL staff undergo safeguarding training (including online-safety) at induction and with regular updates and that they agree and adhere to policies and procedures
- 1.3.1.5. Ensure ALL governors and trustees undergo safeguarding and child protection training and updates (including online-safety) to provide strategic challenge and oversight into policy and practice and that governors are regularly updated on the nature and effectiveness of the school's arrangements [LGfL's Safeguarding Training for School Governors is free to all governors at safetraining.lgfl.net]
- 1.3.1.6. Ensure the school implements and makes effective use of appropriate ICT systems and services including school-safe filtering and monitoring, protected email systems and that all technology including remote systems are implemented according to child-safety first principles
- 1.3.1.7. Better understand, review and drive the rationale behind decisions in filtering and monitoring as per the new DfE standards—through regular liaison with technical colleagues and the DSL– in particular understand what is blocked or allowed for whom, when, and how as per KCSIE.
- 1.3.1.8. In 2023/4 this will involve starting regular checks and annual reviews, upskilling the DSL and appointing a filtering and monitoring governor
- 1.3.1.9. Liaise with the designated safeguarding lead on all online-safety issues which might arise and receive regular updates on school issues and

broader policy and practice information

- 1.3.1.10. Support safeguarding leads and technical staff as they review protections for pupils in the home and remote-learning procedures, rules and safeguards [see remotesafe.lgfl.net for policy guidance and an infographic overview of safeguarding considerations for remote teaching technology]
 - 1.3.1.11. Take overall responsibility for data management and information security ensuring the school's provision follows best practice in information handling; work with the DPO, DSL and governors to ensure a compliant framework for storing data, but helping to ensure that child protection is always put first and data-protection processes support careful and legal sharing of information
 - 1.3.1.12. Understand and make all staff aware of procedures to be followed in the event of a serious online safeguarding incident
 - 1.3.1.13. Ensure suitable risk assessments are undertaken so the curriculum meets needs of pupils, including risk of children being radicalised
 - 1.3.1.14. Ensure the school website meets statutory requirements [websiterag.lgfl.net can help you with this]
- 1.4. Designated Safeguarding Lead / Online Safety Lead – [NAME - don't edit on contents page but in titles themselves]
- 1.4.1. Key responsibilities (remember the DSL can delegate certain online-safety duties but not the overall responsibility; this assertion and all quotes below are from Keeping Children Safe in Education):
 - 1.4.2. The DSL should “take lead responsibility for safeguarding and child protection (including online safety and understanding the filtering and monitoring systems and processes in place).
 - 1.4.3. Ensure “An effective whole school approach to online safety as per KCSIE
 - 1.4.4. In 2023/4 working to take up the new responsibility for filtering and monitoring by working closely with technical colleagues, SLT and the new filtering governor to learn more about this area, better understand, review and drive the rationale behind systems in place and initiate regular checks and annual reviews, including support for devices in the home. [[LGfL's Safeguarding Shorts: Filtering for DSLs and SLT](#) twilight provides a quick overview and there is lots of information for DSLs at safefiltering.lgfl.net and appropriate.lgfl.net]

- 1.4.5. Where online-safety duties are delegated and in areas of the curriculum where the DSL is not directly responsible but which cover areas of online safety (e.g. RHE), ensure there is regular review and open communication and that the DSL's clear overarching responsibility for online safety is not compromised or messaging to pupils confused
- 1.4.6. Ensure ALL staff and supply staff undergo safeguarding and child protection training (including online-safety) at induction and that this is regularly updated.
- 1.4.7. In 2023/4 this must include filtering and monitoring and help them to understand their roles
- 1.4.8. all staff must read KCSIE Part 1 and all those working with children also Annex B – translations are available in 13 community languages at kcsietranslate.lgfl.net (B the condensed Annex A can be provided instead to staff who do not directly work with children if this is better)
- 1.4.9. cascade knowledge of risks and opportunities throughout the organisation
- 1.4.10. safecpd.lgfl.net has helpful CPD materials including PowerPoints, videos and more
- 1.4.11. Ensure that ALL governors and trustees undergo safeguarding and child protection training (including online-safety) at induction to enable them to provide strategic challenge and oversight into policy and practice and that this is regularly updated – [LGfL's Safeguarding Training for school governors is free to all governors at safetraining.lgfl.net]
- 1.4.12. Take day-to-day responsibility for safeguarding issues and be aware of the potential for serious child protection concerns
- 1.4.13. Be mindful of using appropriate language and terminology around children when managing concerns, including avoiding victim-blaming language [see spotlight.lgfl.net for a resource to use with staff on how framing things linguistically can have a safeguarding impact, and some expressions we use might be unhelpful]
- 1.4.14. Remind staff of safeguarding considerations as part of a review of remote learning procedures and technology, including that the same principles of online-safety and behaviour apply
- 1.4.15. Work closely with SLT, staff and technical colleagues to complete an online safety audit (including technology in use in the school) – [see LGfL's template with questions to use at onlinesafetyaudit.lgfl.net]
- 1.4.16. Work with the headteacher, DPO and governors to ensure a compliant framework for storing data, but helping to ensure that child protection is always

put first and data-protection processes support careful and legal sharing of information

- 1.4.17. Stay up to date with the latest trends in online safeguarding and “undertake Prevent awareness training.” – see safetraining.lgfl.net and prevent.lgfl.net
- 1.4.18. Review and update this policy, other online safety documents (e.g. Acceptable Use Policies) and the strategy on which they are based (in harmony with policies for behaviour, safeguarding, Prevent and others) and submit for review to the governors/trustees.
- 1.4.19. Receive regular updates in online-safety issues and legislation, be aware of local and school trends – see safeblog.lgfl.net for examples or sign up to the [LGfL safeguarding newsletter](https://lgflsafeguarding.com)
- 1.4.20. Ensure that online-safety education is embedded across the curriculum in line with the statutory RHE guidance (e.g. by use of the updated UKCIS framework ‘[Education for a Connected World – 2020 edition](https://www.ukcis.org/education-for-a-connected-world-2020-edition)’) and beyond, in wider school life
- 1.4.21. Promote an awareness of and commitment to online-safety throughout the school community, with a strong focus on parents, including hard-to-reach parents – dedicated resources at parentsafe.lgfl.net
- 1.4.22. Communicate regularly with SLT and the safeguarding governor/committee to discuss current issues (anonymised), review incident logs and filtering/change control logs and discuss how filtering and monitoring work and have been functioning/helping.
- 1.4.23. Ensure all staff are aware of the procedures that need to be followed in the event of an online safety incident, and that these are logged in the same way as any other safeguarding incident.
- 1.4.24. Ensure adequate provision for staff to flag issues when not in school and for pupils to disclose issues when off site, especially when in isolation/quarantine, e.g. a [survey to facilitate disclosures](https://www.lgfl.net/parentsafe/survey-to-facilitate-disclosures) and an online form on the school home page about ‘something that worrying me’ that gets mailed securely to the DSL inbox
- 1.4.25. Ensure staff adopt a zero-tolerance, whole school approach to all forms of child-on-child abuse, and don’t dismiss it as banter (including bullying).
- 1.4.26. Pay particular attention to online tutors, both those engaged by the school as part of the DfE scheme who can be asked to sign the contractor AUP, [template you can use at safepolicies.lgfl.net with provisions] and those hired by parents. [share [the Online Tutors – Keeping Children Safe](https://www.lgfl.net/parentsafe/the-online-tutors-keeping-children-safe) poster at parentsafe.lgfl.net to remind parents of key safeguarding principles]

1.5. Governing Body, led by Online Safety / Safeguarding Link Governor – [NAME - don't edit on contents page but in titles themselves]

Key responsibilities (quotes are taken from Keeping Children Safe in Education)

- 1.5.1. Approve this policy and strategy and subsequently review its effectiveness, e.g. by asking the questions in the helpful document from the UK Council for Child Internet Safety (UKCIS) [Online safety in schools and colleges: Questions from the Governing Board](#)
- 1.5.2. Undergo (and signpost all other governors and Trustees to attend) safeguarding and child protection training (including online safety) at induction to provide strategic challenge and into policy and practice, ensuring this is regularly updated – [LGfL's Safeguarding Training for school governors is free to all governors at [safetraining.lgfl.net](#)]
- 1.5.3. Ensure that all staff also receive appropriate safeguarding and child protection (including online) training at induction and that this is updated
- 1.5.4. Appoint a filtering and monitoring governor to work closely with the DSL on the new filtering and monitoring standards [there is guidance for governors at [safefiltering.lgfl.net](#)]
- 1.5.5. Support the school in encouraging parents and the wider community to become engaged in online safety activities
- 1.5.6. Have regular strategic reviews with the online-safety coordinator / DSL and incorporate online safety into standing discussions of safeguarding at governor meetings
- 1.5.7. Work with the DPO, DSL and headteacher to ensure a compliant framework for storing data, but helping to ensure that child protection is always put first and data-protection processes support careful and legal sharing of information
- 1.5.8. Check all school staff have read Part 1 of KCSIE; SLT and all working directly with children have read Annex B
- 1.5.9. Ensure that all staff undergo safeguarding and child protection training (including online safety and now also reminders about filtering and monitoring
- 1.5.10. "Ensure that children are taught about safeguarding, including online safety [...] as part of providing a broad and balanced curriculum [...] Consider a whole school or college approach to online safety [with] a clear policy on the use of mobile technology." [NB – you may wish to refer to 'Teaching Online Safety in Schools 2019' and investigate/adopt the UKCIS cross-curricular framework 'Education for a Connected World – 2020 edition' to support a whole-school approach]

1.6. PSHE / RHE Lead/s – [NAME - don't edit on contents page but in titles themselves]

1.6.1. Key responsibilities:

- 1.6.1.1. As listed in the 'all staff' section, plus:
- 1.6.1.2. Embed consent, mental wellbeing, healthy relationships and staying safe online as well as raising awareness of the risks and challenges from recent trends in self-generative artificial intelligence, financial extortion and sharing intimate pictures online into the PSHE / Relationships education, relationships and sex education (RHE) and health education curriculum. "This will include being taught what positive, healthy and respectful online relationships look like, the effects of their online actions on others and knowing how to recognise and display respectful behaviour online. Throughout these subjects, teachers will address online safety and appropriate behaviour in an age appropriate way that is relevant to their pupils' lives." [training is available at safetraining.lgfl.net]
- 1.6.1.3. Focus on the underpinning knowledge and behaviours outlined in [Teaching Online Safety in Schools](#) in an age appropriate way to help pupils to navigate the online world safely and confidently regardless of their device, platform or app.
- 1.6.1.4. Assess teaching to "identify where pupils need extra support or intervention [through] tests, written assignments or self evaluations, to capture progress" – [see LGfL's SafeSkills Online Safety Quiz and diagnostic teaching tool at safeskillsinfo.lgfl.net] to complement the computing curriculum,.
- 1.6.1.5. Work closely with the DSL/OSL and all other staff to ensure an understanding of the issues, approaches and messaging within PSHE / RHE.
- 1.6.1.6. Note that an RHE policy should be included on the school website.
- 1.6.1.7. Work closely with the Computing subject leader to avoid overlap but ensure a complementary whole-school approach, and with all other lead staff to embed the same whole-school approach

1.7. Computing Lead – [NAME - don't edit on contents page but in titles themselves]

1.7.1. Key responsibilities:

- 1.7.1.1. As listed in the 'all staff' section, plus:

- 1.7.1.2. Oversee the delivery of the online safety element of the Computing curriculum in accordance with the national curriculum
- 1.7.1.3. Work closely with the RHE lead to avoid overlap but ensure a complementary whole-school approach
- 1.7.1.4. Work closely with the DSL/OSL and all other staff to ensure an understanding of the issues, approaches and messaging within Computing
- 1.7.1.5. Collaborate with technical staff and others responsible for ICT use in school to ensure a common and consistent approach, in line with acceptable-use agreements

1.8. Subject / aspect leaders

1.8.1. Key responsibilities

- 1.8.1.1. As listed in the 'all staff' section, plus:
- 1.8.1.2. Look for opportunities to embed online safety in your subject or aspect, especially as part of the RHE curriculum, and model positive attitudes and approaches to staff and pupils alike
- 1.8.1.3. Consider how the UKCIS framework Education for a Connected World and Teaching Online Safety in Schools can be applied in your context
- 1.8.1.4. Work closely with the DSL/OSL and all other staff to ensure an understanding of the issues, approaches and messaging within Computing
- 1.8.1.5. Ensure subject specific action plans also have an online-safety element

1.9. Network Manager/other technical support roles – [NAME - don't edit on contents page but in titles themselves]

1.9.1. Key responsibilities:

- 1.9.1.1. As listed in the 'all staff' section, plus:
- 1.9.1.2. Collaborate regularly with the DSL and leadership team to help them make key strategic decisions around the safeguarding elements of technology.
- 1.9.1.3. Note that KCSIE changes expect a great understanding of technology and its role in safeguarding when it comes to filtering and monitoring and

in 2023/4 you will be required to support safeguarding teams to understand and manage these systems and carry out regular reviews and annual checks.

- 1.9.1.4. Support DSLs and SLT to carry out an annual online safety audit as now recommended in KCSIE. [LGfL has a free template you can use at <https://onlinesafetyaudit.lgfl.net>] This should also include a review of technology, including filtering and monitoring systems (what is allowed, blocked and why and how 'over blocking' is avoided as per KCSIE) to support their role as per the new DfE standards, [we recommend you signpost them to LGfL's Safeguarding Shorts: Filtering for DSLs and SLT twilight at safetraining.lgfl.net which provides a quick overview to help build their understanding] protections for pupils in the home [e.g. LGfL HomeProtect filtering for the home – <https://homeprotect.lgfl.net>] and remote-learning. [see remotesafe.lgfl.net for guidance]
- 1.9.1.5. Keep up to date with the school's online safety policy and technical information in order to effectively carry out their online safety role and to inform and update others as relevant
- 1.9.1.6. Work closely with the designated safeguarding lead / online safety lead / data protection officer / LGfL nominated contact / RHE lead to ensure that school systems and networks reflect school policy and there are no conflicts between educational messages and practice.
- 1.9.1.7. Ensure the above stakeholders understand the consequences of existing services and of any changes to these systems (especially in terms of access to personal and sensitive records / data and to systems such as YouTube mode, web filtering settings, sharing permissions for files on cloud platforms etc
- 1.9.1.8. Maintain up-to-date documentation of the school's online security and technical procedures
- 1.9.1.9. To report online-safety related issues that come to their attention in line with school policy
- 1.9.1.10. Manage the school's systems, networks and devices, according to a strict password policy, with systems in place for detection of misuse and malicious attack, with adequate protection, encryption and backup for data, including disaster recovery plans, and auditable access controls.
- 1.9.1.11. Ensure the data protection policy and cybersecurity policy are up to date, easy to follow and practicable [Network managers/technicians at LGfL schools may want to ensure that you take advantage of the following solutions which are part of your package: Sophos Anti-Virus, Sophos Anti-Phish, Sophos InterceptX, Sophos Server Advance, Malware Bytes, Egress, Meraki Mobile Device Management and

CloudReady/NeverWare. These solutions which are part of your package will help protect the network and users on it]

- 1.9.1.12. Monitor the use of school technology, online platforms and social media presence [move this requirement to a different role outline as appropriate] and that any misuse/attempted misuse is identified and reported in line with school policy
- 1.9.1.13. Work with the Headteacher to ensure the school website meets statutory DfE requirements [see website audit tool at websiteseraq.lgfl.net / this may well be part of someone else's role, but the technical team is likely to play at least some role in working with the web team – move this bullet point as appropriate]

1.10. Data Protection Officer (DPO) – [NAME - don't edit on contents page but in titles themselves]

1.10.1. Key responsibilities:

- 1.10.1.1. Alongside those of other staff, provide data protection expertise and training and support the DP and cybersecurity policy and compliance with those and legislation and ensure that the policies conform with each other and with this policy.
- 1.10.1.2. Not prevent, or limit, the sharing of information for the purposes of keeping children safe. As outlined in Data protection in schools, 2023, "It's not usually necessary to ask for consent to share personal information for the purposes of safeguarding a child." And in KCSIE 2023, "The Data Protection Act 2018 and UK GDPR do not prevent the sharing of information for the purposes of keeping children safe. Fears about sharing information must not be allowed to stand in the way of the need to safeguard and promote the welfare and protect the safety of children."
- 1.10.1.3. Note that retention schedules for safeguarding records may be required to be set as 'Very long term need (until pupil is aged 25 or older)'. However, some local authorities require record retention until 25 for all pupil records. An example of an LA safeguarding record retention policy can be read at safepolicies.lgfl.net, but you should check the rules in your area.
- 1.10.1.4. Ensure that all access to safeguarding data is limited as appropriate, and also monitored and audited

1.11. Volunteers and contractors (including tutor)

1.11.1. Key responsibilities:

- 1.11.1.1. Read, understand, sign and adhere to an acceptable use policy (AUP)
- 1.11.1.2. Report any concerns, no matter how small, to the designated safety lead
- 1.11.1.3. Maintain an awareness of current online safety issues and guidance
- 1.11.1.4. Model safe, responsible and professional behaviours in their own use of technology at school and as part of remote teaching or any online communications
- 1.11.1.5. Note that as per AUP agreement a contractor will never attempt to arrange any meeting, including tutoring session, without the full prior knowledge and approval of the school, and will never do so directly with a pupil. The same applies to any private/direct communication with a pupil.

1.12. Pupils

1.12.1. Key responsibilities:

- 1.12.1.1. Read, understand, sign and adhere to the student/pupil acceptable use policy

1.13. Parents/carers

1.13.1. Key responsibilities:

- 1.13.1.1. Read, sign and adhere to the school's parental acceptable use policy (AUP), read the pupil AUP and encourage their children to follow it

1.14. External groups including parent associations – [GROUP NAME - don't edit on contents page but in title]

1.14.1. Key responsibilities:

- 1.14.1.1. Any external individual/organisation will sign an acceptable use policy prior to using technology or the internet within school
- 1.14.1.2. Support the school in promoting online safety and data protection

- 1.14.1.3. Model safe, responsible, respectful and positive behaviours in their own use of technology, including on social media: not sharing other's images or details without permission and refraining from posting negative, threatening or violent comments about others, including the school staff, volunteers, governors, contractors, pupils or other parents/carers